

YEAR

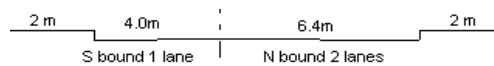
2014

LINK

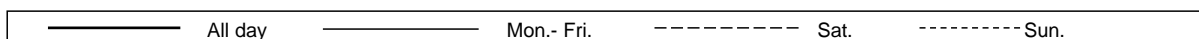
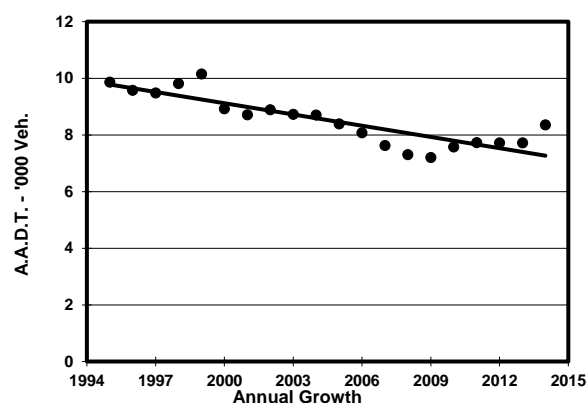
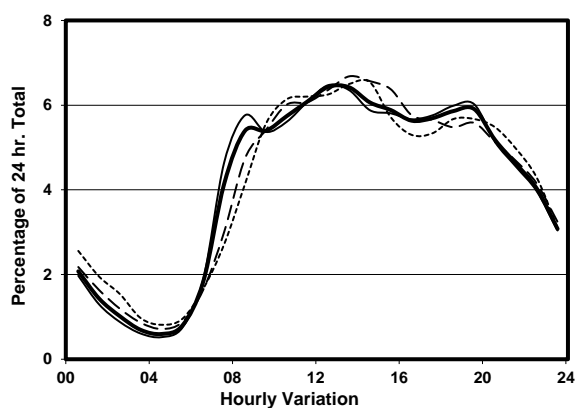
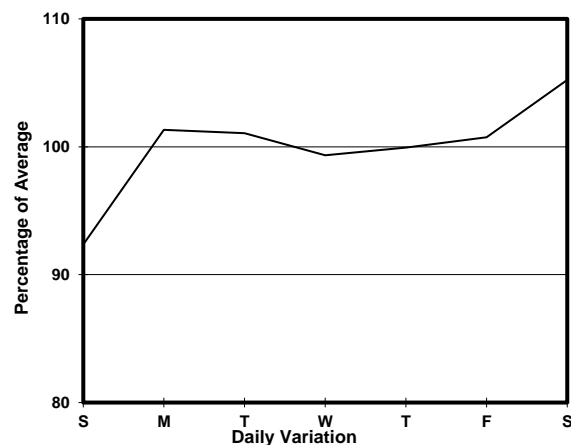
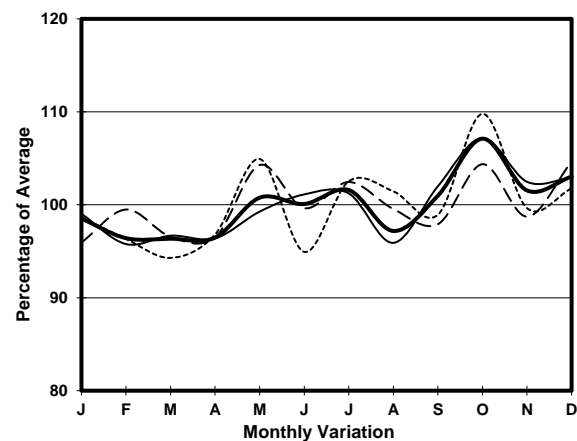
KO SHAN RD (from PAK KUNG ST to CHI KIANG ST)

CORE STATION  
ROAD NETWORK  
ROAD TYPE

3103  
MINOR  
LOCAL DISTRIBUTOR



## 1. TRAFFIC FLOW VARIATION AND GROWTH



## 2. TRAFFIC CHARACTERISTICS (BY DIRECTION)

| Parameter                            | All - Day | Mon. - Fri. | Sat.      | Sun.      |
|--------------------------------------|-----------|-------------|-----------|-----------|
| <b>SOUTH BOUND</b>                   |           |             |           |           |
| A.A.D.T.                             | 3320      | 3350        | 3540      | 3040      |
| R 12 / 24 - %                        | 68.2      | 69          | 67.3      | 64.8      |
| R 16 / 24 - %                        | 88.1      | 88.7        | 87        | 86.2      |
| AM Peak Hour                         | 0800-0900 | 0800-0900   | 0900-1000 | 0900-1000 |
| One-way flow at AM peak hour         | 190       | 210         | 190       | 170       |
| T - % (AM)                           | -         | 2           | -         | -         |
| PM Peak Hour                         | 1700-1800 | 1700-1800   | 1600-1700 | 1800-1900 |
| One-way flow at PM peak hour         | 190       | 190         | 200       | 180       |
| T - % (PM)                           | -         | 2.2         | -         | -         |
| Prop.of commercial vehicles - 16 hr. | -         | 3.4         | -         | -         |
| <b>NORTH BOUND</b>                   |           |             |           |           |
| A.A.D.T.                             | 5030      | 5070        | 5290      | 4700      |
| R 12 / 24 - %                        | 69.1      | 69.7        | 68.7      | 66.9      |
| R 16 / 24 - %                        | 88.8      | 89.3        | 88.1      | 86.6      |
| AM Peak Hour                         | 0900-1000 | 0900-1000   | 0900-1000 | 0900-1000 |
| One-way flow at AM peak hour         | 280       | 280         | 290       | 260       |
| T - % (AM)                           | -         | 1.4         | -         | -         |
| PM Peak Hour                         | 1800-1900 | 1800-1900   | 1600-1700 | 1800-1900 |
| One-way flow at PM peak hour         | 300       | 310         | 300       | 260       |
| T - % (PM)                           | -         | -           | -         | -         |
| Prop.of commercial vehicles - 16 hr. | -         | 2.2         | -         | -         |

## 3. OTHER INFORMATION AND COMMENT

**4. Vehicle classification and occupancy - Monday to Friday**

| Time                   |     | Class of vehicle |         |      |         |      |            |       |         |         |     |
|------------------------|-----|------------------|---------|------|---------|------|------------|-------|---------|---------|-----|
|                        |     | Motor            | Private | Taxi | Private | PLB  | Goods veh. |       | Non     | Fr. Bus |     |
|                        |     | Cycle            | Car     |      | LB      |      | Light      | M & H | Fr. Bus | SD      | DD  |
| 0700-0800              | Pro | 1.1              | 19.3    | 33.0 | 10.2    | 11.4 | 17.0       | 0.0   | 8.0     | 0.0     | 0.0 |
|                        | Ocp | 1.0              | 1.3     | 2.1  | 6.4     | 4.1  | 1.4        | 0.0   | 11.0    | 0.0     | 0.0 |
| 0800-0900              | Pro | 2.0              | 43.0    | 25.0 | 7.0     | 9.0  | 11.0       | 1.0   | 2.0     | 0.0     | 0.0 |
|                        | Ocp | 1.0              | 1.4     | 1.9  | 6.4     | 11.2 | 1.4        | 1.0   | 10.5    | 0.0     | 0.0 |
| 0900-1000              | Pro | 1.7              | 27.1    | 39.0 | 3.4     | 14.4 | 11.0       | 1.7   | 1.7     | 0.0     | 0.0 |
|                        | Ocp | 1.0              | 1.3     | 1.5  | 4.0     | 5.4  | 1.5        | 1.5   | 21.0    | 0.0     | 0.0 |
| 1000-1100              | Pro | 5.8              | 21.4    | 47.6 | 0.0     | 11.7 | 11.7       | 1.0   | 1.0     | 0.0     | 0.0 |
|                        | Ocp | 1.0              | 1.7     | 1.5  | 0.0     | 5.8  | 1.9        | 1.0   | 1.0     | 0.0     | 0.0 |
| 1100-1200              | Pro | 1.0              | 27.0    | 49.0 | 1.0     | 5.0  | 13.0       | 0.0   | 4.0     | 0.0     | 0.0 |
|                        | Ocp | 1.0              | 1.6     | 1.4  | 1.0     | 7.8  | 1.6        | 0.0   | 1.8     | 0.0     | 0.0 |
| 1200-1300<br>Peak hour | Pro | 3.3              | 25.2    | 38.2 | 7.3     | 4.9  | 16.3       | 3.3   | 1.6     | 0.0     | 0.0 |
|                        | Ocp | 1.0              | 1.6     | 1.4  | 3.7     | 9.2  | 1.6        | 2.0   | 11.0    | 0.0     | 0.0 |
| 1300-1400              | Pro | 0.7              | 24.3    | 42.6 | 7.4     | 5.9  | 14.0       | 1.5   | 3.7     | 0.0     | 0.0 |
|                        | Ocp | 1.0              | 1.6     | 1.7  | 2.5     | 7.1  | 1.6        | 2.5   | 27.2    | 0.0     | 0.0 |
| 1400-1500              | Pro | 2.3              | 21.6    | 43.2 | 3.4     | 9.1  | 17.0       | 2.3   | 1.1     | 0.0     | 0.0 |
|                        | Ocp | 1.0              | 1.8     | 1.6  | 1.7     | 8.6  | 1.6        | 1.5   | 43.0    | 0.0     | 0.0 |
| 1500-1600              | Pro | 1.0              | 32.4    | 35.2 | 1.9     | 6.7  | 19.0       | 1.0   | 2.9     | 0.0     | 0.0 |
|                        | Ocp | 1.0              | 1.3     | 1.4  | 9.0     | 8.7  | 2.1        | 1.0   | 12.0    | 0.0     | 0.0 |
| 1600-1700              | Pro | 2.9              | 36.2    | 31.4 | 6.7     | 9.5  | 9.5        | 1.0   | 2.9     | 0.0     | 0.0 |
|                        | Ocp | 1.0              | 1.6     | 1.8  | 4.0     | 7.7  | 1.7        | 2.0   | 6.3     | 0.0     | 0.0 |
| 1700-1800              | Pro | 6.4              | 24.5    | 36.2 | 4.3     | 9.6  | 18.1       | 0.0   | 1.1     | 0.0     | 0.0 |
|                        | Ocp | 1.0              | 1.3     | 1.8  | 6.0     | 7.6  | 1.4        | 0.0   | 2.0     | 0.0     | 0.0 |
| 1800-1900              | Pro | 7.4              | 43.4    | 31.1 | 0.8     | 5.7  | 10.7       | 0.8   | 0.0     | 0.0     | 0.0 |
|                        | Ocp | 1.1              | 1.7     | 1.8  | 2.0     | 15.3 | 1.4        | 1.0   | 0.0     | 0.0     | 0.0 |
| 1900-2000              | Pro | 11.1             | 27.4    | 42.2 | 0.0     | 11.1 | 8.1        | 0.0   | 0.0     | 0.0     | 0.0 |
|                        | Ocp | 1.0              | 1.7     | 1.8  | 0.0     | 6.0  | 1.7        | 0.0   | 0.0     | 0.0     | 0.0 |
| 2000-2100              | Pro | 2.8              | 31.5    | 45.4 | 0.9     | 13.0 | 6.5        | 0.0   | 0.0     | 0.0     | 0.0 |
|                        | Ocp | 1.0              | 2.0     | 2.0  | 3.0     | 6.0  | 1.6        | 0.0   | 0.0     | 0.0     | 0.0 |
| 2100-2200              | Pro | 9.2              | 28.7    | 47.1 | 0.0     | 10.3 | 4.6        | 0.0   | 0.0     | 0.0     | 0.0 |
|                        | Ocp | 1.0              | 2.0     | 1.7  | 0.0     | 4.9  | 2.5        | 0.0   | 0.0     | 0.0     | 0.0 |
| 2200-2300              | Pro | 11.8             | 36.6    | 35.5 | 0.0     | 8.6  | 7.5        | 0.0   | 0.0     | 0.0     | 0.0 |
|                        | Ocp | 1.0              | 2.1     | 1.7  | 0.0     | 6.4  | 1.9        | 0.0   | 0.0     | 0.0     | 0.0 |
| 16 hours               | Pro | 4.4              | 29.4    | 38.9 | 3.4     | 9.0  | 12.1       | 0.9   | 1.8     | 0.0     | 0.0 |
|                        | Ocp | 1.0              | 1.6     | 1.7  | 4.4     | 7.2  | 1.6        | 1.7   | 13.1    | 0.0     | 0.0 |

**Legend**

**Pro.** Proportion of vehicles in % (Sum may not add up to 100% due to figure rounding)  
**Ocp.** Average occupancy of vehicles  
**M&H** Medium and Heavy